

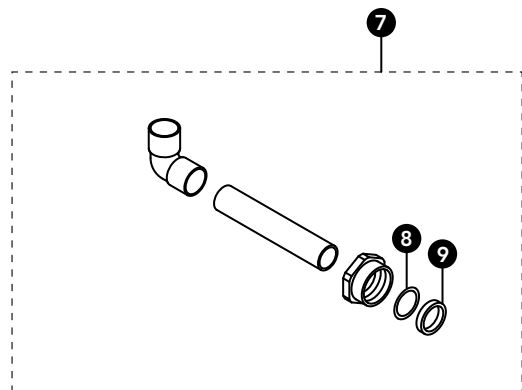
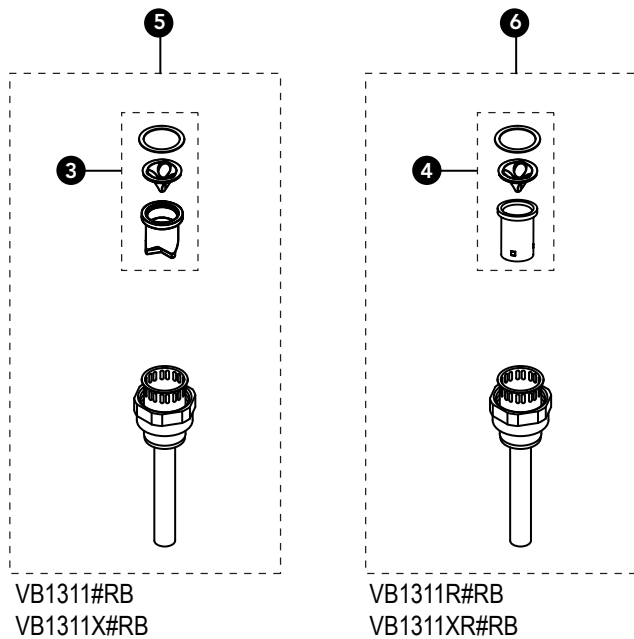
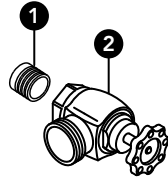
# VB1311(X)(R)#RB

VB1311#RB  
 VB1311R#RB  
 VB1311X#RB

VB1311XR#RB

## Vacuum Breaker & Angle Stop Set for Urinal w/Concealed, Back Spud 3/4" Outlet

| Item | Part        | Description                                |
|------|-------------|--|
| 1    | SJ1         | Solder Adapter 3/4"                        |
|      | THP3316     | Solder Adapter 3/4" RW*                    |
| 2    | 10077T6     | Angle Stop (3/4") Urinal - Rough Brass     |
|      | THP3315#RB  | Angle Stop (3/4") Urinal - Rough Brass RW* |
| 3    | THP3292     | Vacuum Breaker Repair Kit                  |
| 4    | THP3545     | Vacuum Breaker Repair Kit (Skirted)        |
| 5    | THP3289#RB  | Tube Assembly (3/4" x 13")                 |
|      | THP3328#RB  | Tube Assembly (3/4" x 13") RW*             |
| 6    | THP3289R#RB | Tube Assembly (3/4" x 13")                 |
|      | THP3328R#RB | Tube Assembly (3/4" x 13") RW*             |
| 7    | TH559EDV171 | Outlet Tube 3/4" for VB1311(R)#RB          |
|      | THP3318     | Outlet Tube 3/4" RW* for VB1311X(R)#RB     |
| 8    | R72116MZ    | Friction Ring 3/4" (10/bag)                |
| 9    | R81376MZ    | Gaskets 3/4" (10/bag)                      |



\* RW = for Reclaimed Water. Includes VB1311X#RB, VB1331XR#RB

Note: For Reclaimed Water (RW) applications use the RW version parts where applicable. Do not use standard vacuum breaker, standard control stop, or components with reclaimed water flush valve.