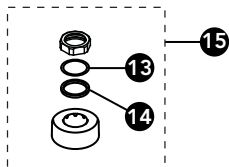
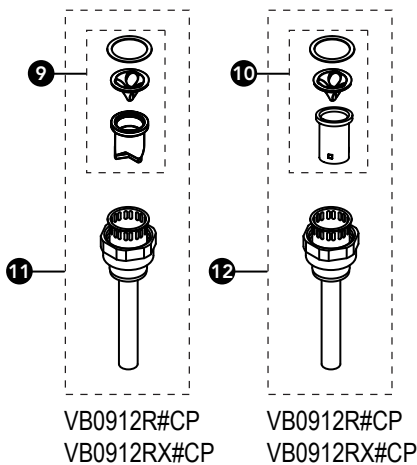
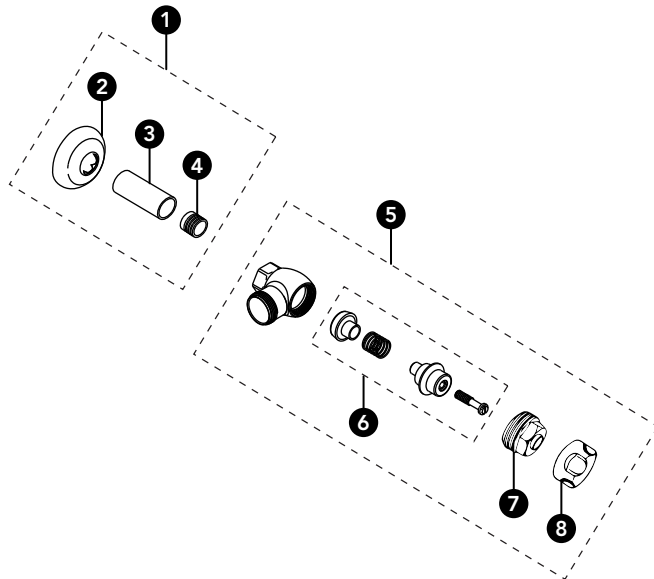


VB0912(X)(R)#CP

VB0912#CP
 VB0912R#CP
 VB0912X#CP

VB0912XR#CP

Vacuum Breaker & Angle Stop Set for Urinal w/ Exposed, Top Spud 3/4" Outlet



Item	Part	Description
1	TH559EDVSJ1	Sweat Solder Kit 3/4"
	THP3319	Sweat Solder Kit 3/4" RW*
2	71051NT8	Wall Flange 3/4"
3	SC1	Sleeve Cover 3/4"
4	SJ1	Solder Adapter 3/4"
	THP3316	Solder Adapter 3/4" RW*
5	10077T4	Angle Stop (3/4") Urinal - Chrome Plated
	THP3313#CP	Angle Stop (3/4") Urinal - Chrome Plated RW*
6	10077T3-PQ	Angle Stop Repair Kit (3/4")
	THP3309	Angle Stop Repair Kit (3/4") RW*
7	10077T3-QQ	Bonnet (3/4") - Not for RW
8	10077T4-XQ	Angle Stop Cap (3/4")
9	THP3292	Vacuum Breaker Repair Kit
10	THP3545	Vacuum Breaker Repair Kit (Skirted)
11	THP3285#CP	Tube Assembly (3/4" x 8-1/2") for VB0912#CP
	THP3325#CP	Tube Assembly (3/4" x 8-1/2") RW* for VB0912X#CP
12	THP3285R#CP	Tube Assembly (3/4" x 8-1/2") for VB0912R#CP
	THP3325R#CP	Tube Assembly (3/4" x 8-1/2") RW* for VB0912XR#CP
13	R72116MZ	Friction Ring 3/4" (10/bag)
14	R81376MZ	Gaskets 3/4" (10/bag)
15	71051NT5	Spud Nut & Escutcheon 3/4"

* RW = for Reclaimed Water. Includes VB0912X#CP, VB0912XR#CP.

Note: For Reclaimed Water (RW) applications use the RW version parts where applicable. Do not use standard vacuum breaker, standard control stop, or components with reclaimed water flush valve.