

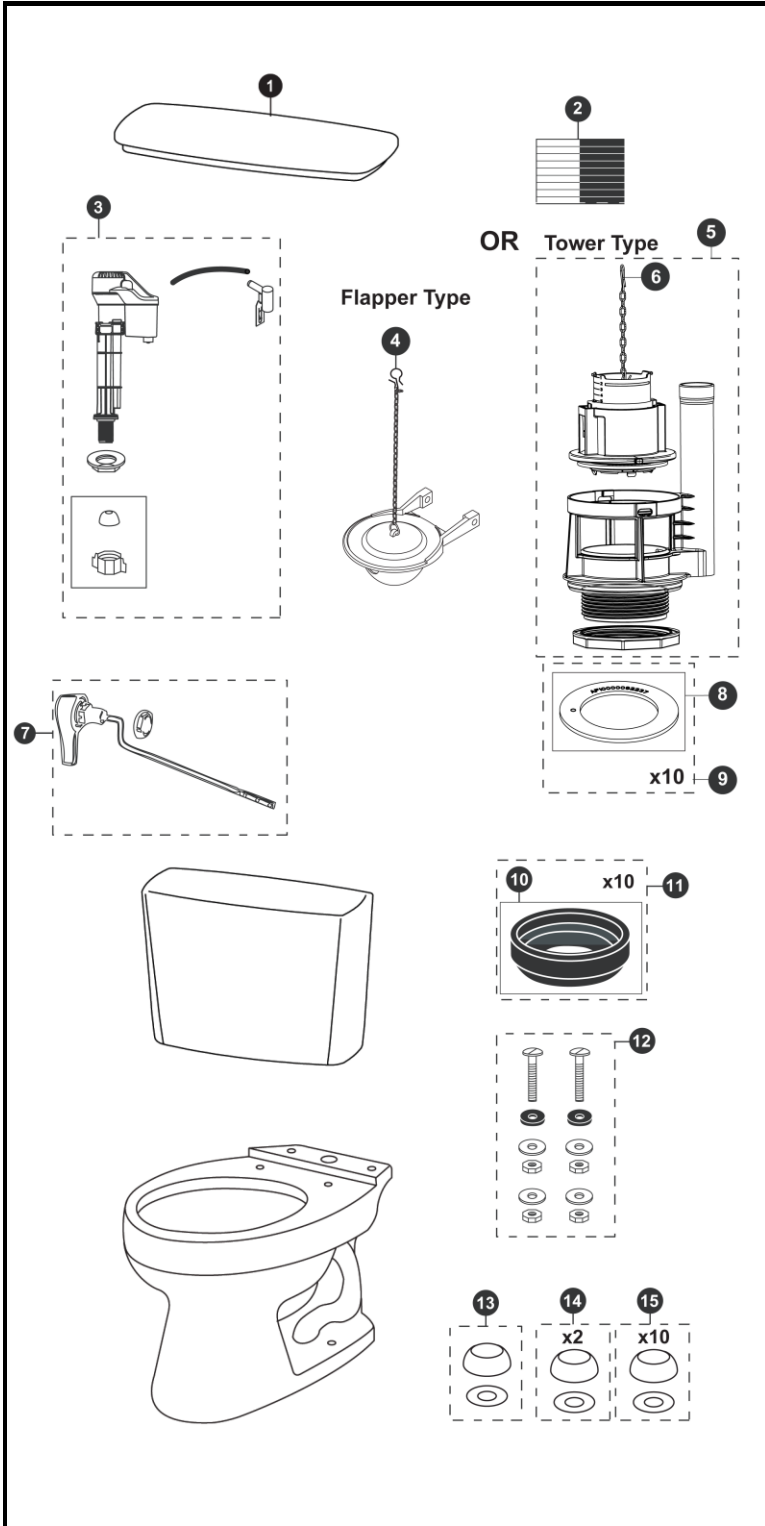
# CST744EN, CST744ERN & CST744E(R)GN

CST744EN  
C744E  
ST744E

CST744EGN  
C744EG  
ST744E

CST744ERGN  
C744ERG  
ST744ER

## EcoDrake® Transitional 1.28 Gpf Toilet, Elongated, E-Max®, 12" Rough-In (including CEFIONTECT®)



Actual Product may vary slightly from illustration.

Item	Part	Description
1	TCU744CRE#01	Tank Lid w/ Velcro Tape - Cotton
	TCU744CRE#03	Tank Lid w/ Velcro Tape - Bone
	TCU744CRE#11	Tank Lid w/ Velcro Tape - Colonial White
	TCU744CRE#12	Tank Lid w/ Velcro Tape - Sedona Beige
	TCU744CRE#51	Tank Lid w/ Velcro Tape - Ebony
2	THU107	Velcro Tape
3	TSU708	Fill Valve
4	THU500S	Flapper w/ Chain
5	THU443.10B-A	Drain Valve for Tower Type
6	THU440-A	Flush Tower
7	THU398#01-A	Trip Lever - Cotton
	THU398#CP-A	Trip Lever - Chrome Plated
	THU398#BN-A	Trip Lever - Brushed Nickel
	THU398#PN-A	Trip Lever - Polished Nickel
	THU399#CP-A	Trip Lever, Right Hand - Chrome Plated
8	THU407	Seal Gasket (1 piece)
9	THU370	Seal Gasket (10 pieces)
10	9BU024E	3" Tank to Bowl Gasket
11	THU131	Tank to Bowl Gaskets (10 pieces)
12	TSU01D	Tank Mounting Kit
13	THU044#01	Bolt Cap Set - Cotton (1 set)
	THU044#03	Bolt Cap Set - Bone (1 set)
	THU044#11	Bolt Cap Set - Colonial White (1 set)
	THU044#12	Bolt Cap Set - Sedona Beige
	THU044#51	Bolt Cap Set - Ebony
14	THU044S#01	Bolt Cap Sets - Cotton (2 pieces)
	THU044S#03	Bolt Cap Sets - Bone (2 pieces)
	THU044S#11	Bolt Cap Sets - Colonial White (2 pieces)
	THU044S#12	Bolt Cap Sets - Sedona Beige (2 pieces)
	THU044S#51	Bolt Cap Sets - Ebony (2 pieces)
15	THU098#01	Bolt Cap Sets - Cotton (20 pieces)
	THU098#03	Bolt Cap Sets - Bone (20 pieces)
	THU098#11	Bolt Cap Sets - Colonial White (20 pieces)
	THU098#12	Bolt Cap Sets - Sedona Beige (20 pieces)
	THU098#51	Bolt Cap Sets - Ebony (20 pieces)

**Note:**

### Product Number Explanations

**Two-Piece Toilet**

(CST) Gravity Type Toilet  
(744) Model #  
(E) E-Max®  
(G) CeFIONtect™  
(L) ADA Compliant  
(N) Model Letter  
(R) Right Hand Option

**Tank**

(ST) Tank  
(744) Model #  
(E) E-Max®  
(R) Right Hand Option

**Bowl**

(C) Bowl  
(744) Model #  
(E) E-Max®  
(L) ADA Compliant  
(G) CeFIONtect™