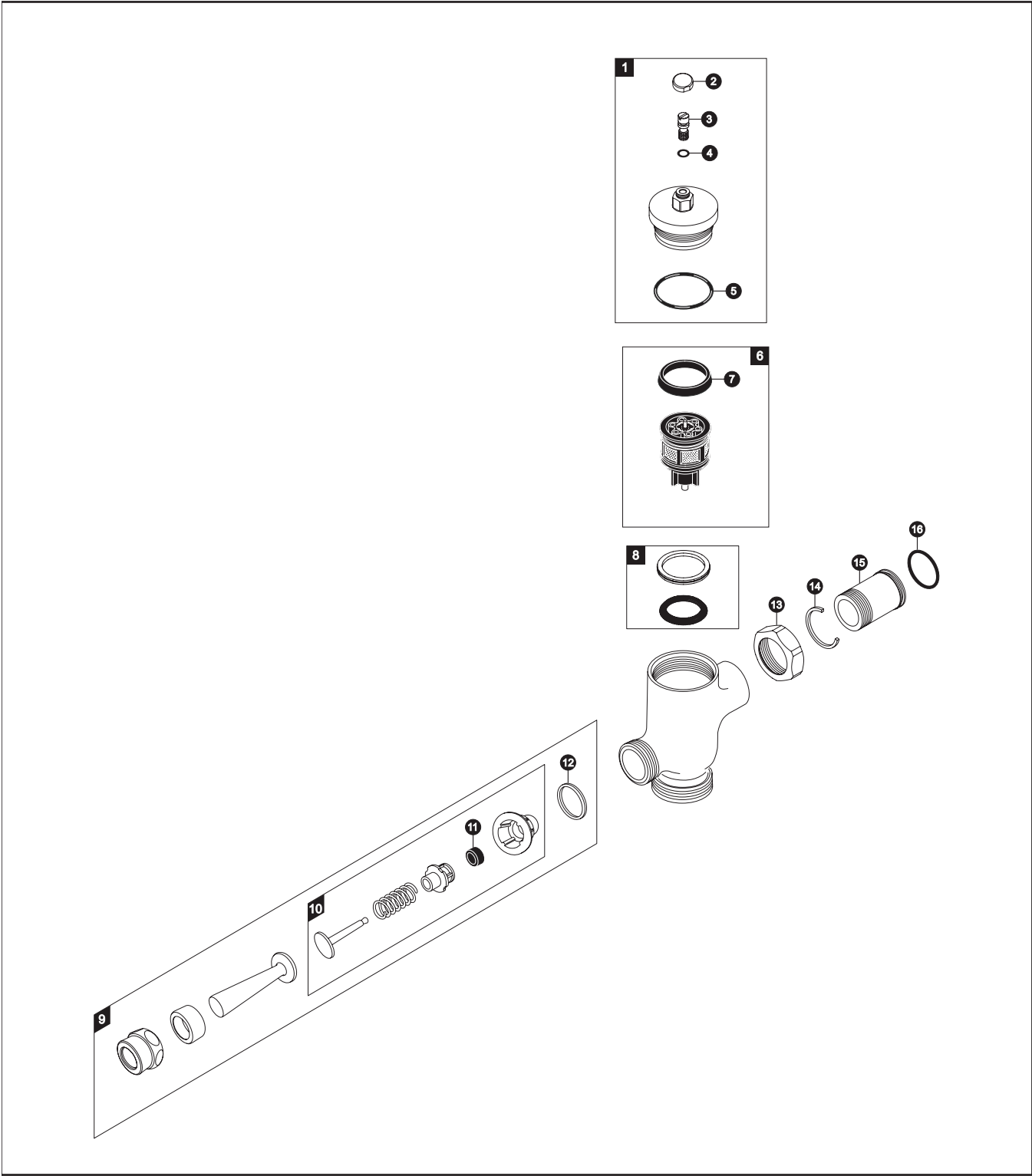


TMU1NNC-12
TMU1NNC-22
TMU1NNC

**Manual Urinal Flush Valve, Exposed - 1.0 GPF
Non-Hold Open**



Manual Urinal Flush Valve, Exposed - 1.0 GPF Non-Hold Open

Item	Part	Description
1	TH305SV119	Valve Cover Set (1.0 GPF)
2	TH305SV108	Screw Cap (MFV & Angle Stop)
3	TH305SV110	Adjustment Screws (Toilet)(10 Pieces)
4	TH305SV111	O-Rings (Cap Screw)(10 Pieces)
5	TH305SV112	O-Rings (Valve Guide)(10 Pieces)
6	TH323V102R	Piston Valve Assembly
7	TH305SV103	U-Packing (For Piston)(10 Pieces)
8	TH321	Seal Washer Kit
9	THYD9	Lever Assembly
10	THY326	Push Button Assembly
11	TH302RV100	Gaskets (U-Packing)(10 Pieces)
12	TH305SV104	Fiber Washers (10 Pieces)
13	TH305SV113	Nut
14	TH305SV105	Locking Rings (10 Pieces)
15	TH305SV114	Tail Piece
16	TH305SV106	O-Rings (Tail Piece)(10 Pieces)

Vacuum Breaker Sets

VB9CP-12	Exposed - Top Spud (3/4" Outlet)
VB9CP-22	Exposed - Top Spud (1-1/4" Outlet)

Notes

For additional information, refer to the individual vacuum breaker parts sheets.

Product Number Explanations

Flush Valve

(T) Fitting
 (M) Manual
 (U) Urinal 1.0
 (1) Exposed
 (N) Non-Hold Open
 (N) Neutral Rough-In
 (C) Chrome Finish
 (1) 3/4" Outlet
 (2) Top Spud

Flush Valve

(T) Fitting
 (M) Manual
 (U) Urinal 1.0
 (1) Exposed
 (N) Non-Hold Open
 (N) Neutral Rough-In
 (C) Chrome Finish
 (2) 1-1/4" Outlet
 (2) Top Spud